

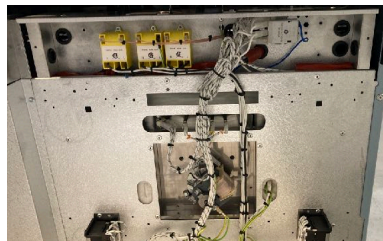
Oven Thermostat Adjustment

Written for ranges with the CE gas oven valve, manufactured after 2016 (Gen.4-5)

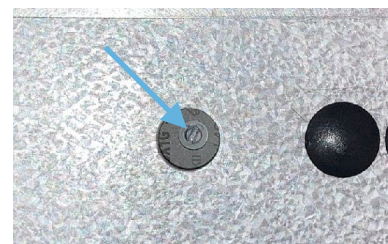
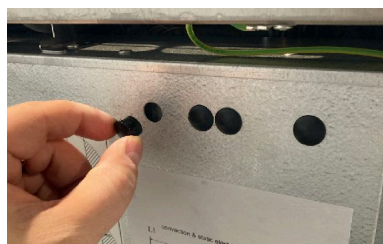
The electric oven thermostat is located just inside the back panel, on the same axis with the oven control shaft. This will require the range to be moved away from the wall slightly so that you have access to the rear panel. Do not attempt to move the range by the towel bar, as this will cause damage to the porcelain enamel of the control panel.

1. There are two ways to access this adjustment screw:

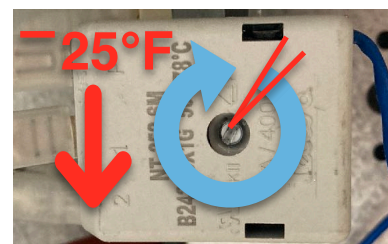
(a) Remove the entire back cover panel by removing the [8] 7mm sheet metal screws that hold the rear cover on. Then carefully lower and tilt the panel away from the back of the range chassis while minding the main power cable at the bottom of the panel.



(b) Remove the plastic plug at the top of the rear panel that covers the adjustment screw. Remove the plug that is aligned with the knob and control shaft of the oven being adjusted. This allows easy access to the screw without having to remove the entire rear panel.



2. To adjust the thermostat you may first need to scrape the anti-tamper paint from the screw head groove. Make certain to use a fine-blade ($\frac{1}{8}$ " wide) screwdriver to avoid stripping the screw. Rotate the screw Clockwise to *Decrease* temp - about 10 degrees of arc = approx. 25°F of temp adjustment.



3. The gas oven thermostat is built into the back of this CE gas oven valve body. This valve does not have a temperature calibration adjustment, it is set by the valve manufacturer. In the event that the average oven temperature consistently tests above or below 25°F from set dial temperature, the gas valve should simply be removed and replaced. Please contact our Support Department for replacement parts or further instructions.

