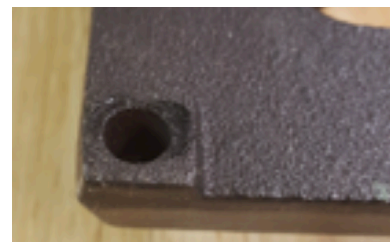


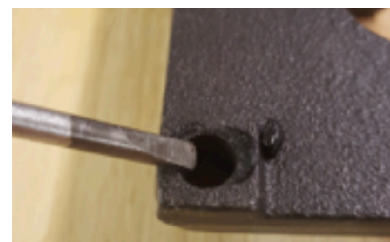
Grate Foot Installation

Written for range models manufactured after 2000 (Gen.1).

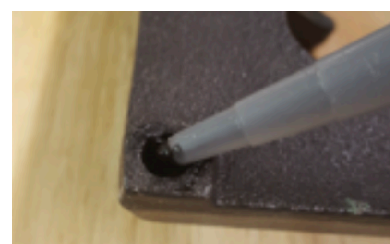
1. Locate missing grate foot.



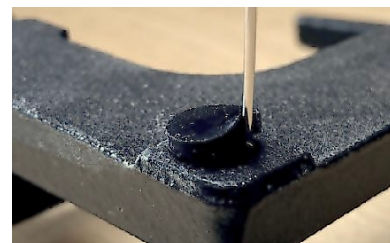
2. Scrape out the old silicone adhesive from the rubber foot socket.



3. Apply a small amount of new high-temp black RTV silicone adhesive into the rubber foot socket.



4. Using a toothpick or a straightened paperclip “rod”, insert the rubber grate foot past the side of the rod to allow any air and/or excess RTV Silicone to squeeze out of the socket from underneath the rubber foot. Then remove the rod and clean up any excess RTV with a spare rag or towel.



5. Place grate on range top and allow time to cure. Ensure that the grate does not wobble when set in place. Add silicone adhesive to a short corner, or remove RTV from a lifted corner if a wobble occurs.

