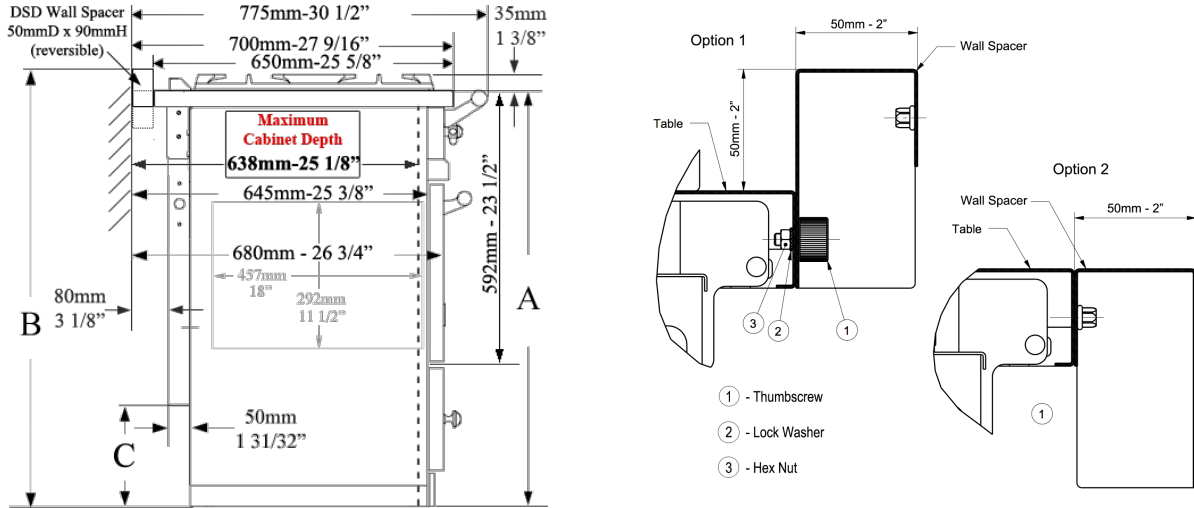


50MM SPACER CABINET PREPARATION

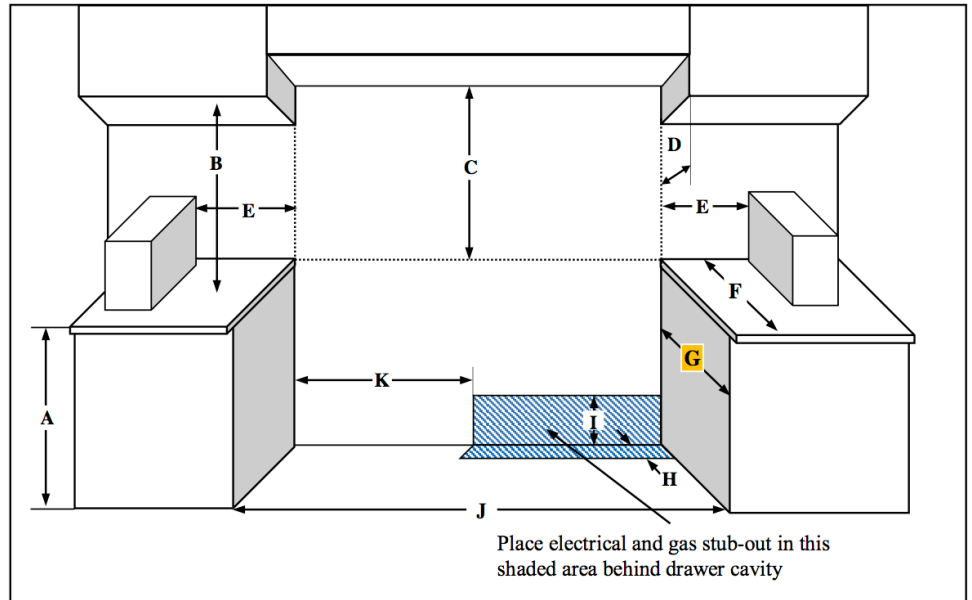


The 50mm range spacer is reversible using the alternate mounting holes on the opposite side of the spacer and the thumb screws provided.

RANGE HEIGHT TABLE			
The default range height of 35 3/8" will adjust to the standard countertop height of 36" using the included extended leveling feet provided (to a maximum height of 36 1/2")			
Range Base Height	A	B	C
Default	35 3/8" - 900mm (max 36 1/2")	37 3/8" - 950mm	8 7/16" - 215mm
Optional	36 5/8" - 930mm (max 37 3/4")	38 9/16" - 980mm	9 5/8" - 245mm
All final range height dimensions are variable with the use of the adjustable range feet; Maximum added height for the Roller Feet: 5/8" - 16mm, Extended Leveling Feet: 1 3/16" - 30mm			

CABINET PREPARATION (with no Warming Cupboard or Vertical Convection oven to the right side):

RANGE WIDTH TABLE		
RANGE MODEL	J (Alcove Width)	K
Cormatin	705mm 27 3/4"	0mm 0"
Rully	705mm 27 3/4"	0mm 0"
Bussy	905mm 35 5/8"	400mm 15 3/4"
Cluny	1005mm 39 9/16"	457mm 18"
Chagny	1005mm 39 9/16"	457mm 18"
Volnay	1005mm 39 9/16"	400mm 15 3/4"
Chassagne	1110mm 43 11/16"	400mm 15 3/4"
Saulieu	1110mm 43 11/16"	400mm 15 3/4"
Sully	1410mm 55 1/2"	705mm 27 3/4"
Cluny 1400 L	1410mm 55 1/2"	905mm 35 5/8"
Chagny 1400 L	1410mm 55 1/2"	905mm 35 5/8"
Sully 1800 L	1810mm 71 1/4"	1305mm 51 3/8"



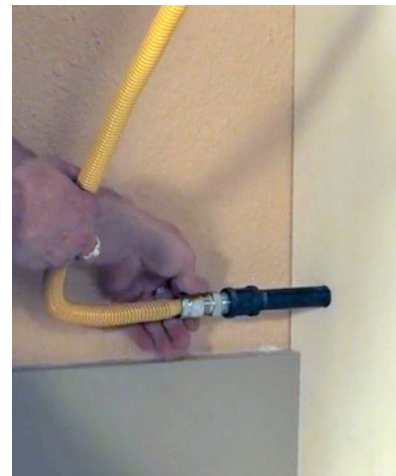
All measurements below are with a 50mm (2") spacer installed:

Range Height	A (min*)	B	C	D	E	F (max)	G (max)	H	I	J	K
Default	900mm 35 3/8"	457mm	914mm	330mm	51mm	700mm	637mm	132mm	215mm	See Range Width Table	
Optional	930mm 36 5/8"	18"	36"	13"	2"	27 9/16"	25 1/8"	5 3/16"	8 7/16"	See Range Width Table	

*All final range height dimensions are variable with the use of the adjustable range feet.
Maximum added height for the Roller Feet: 16mm - 5/8", Extended Leveling Feet : 30mm - 1 3/16"

Rully models have the exact same outer dimensions as the **Cormatin** models, however, the Rully has no bottom drawer cavity to quickly access the gas shut-off valve. The suggested location for the gas shut-off valve for the Rully is in the back of the adjacent right base cabinet (or back access window in an island).

Example:



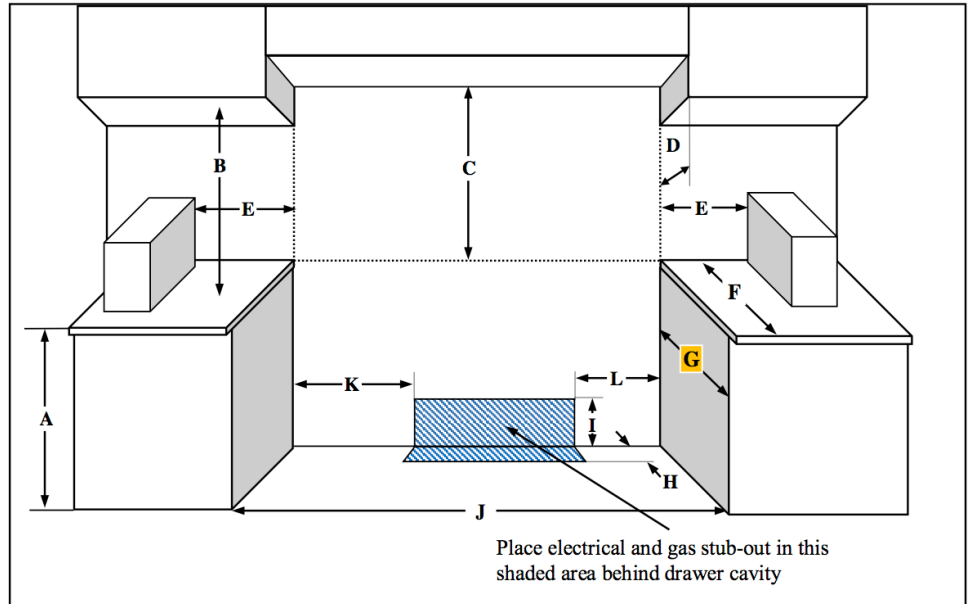
17721 - 132nd Ave. NE Woodinville, WA 98072 USA 1.888.222.2930

www.frenchranges.com

Page 2 of 3

CABINET PREPARATION (with a Warming Cupboard or Vertical Convection oven to the right side):

RANGE WIDTH TABLE			
RANGE MODEL	J (Alcove Width)	K	L
Beaune	905mm 35 5/8"	0mm 0"	400mm 15 3/4"
Vougeot	1005mm 39 9/16"	0mm 0"	400mm 15 3/4"
Chambertin	1110mm 43 11/16"	0mm 0"	400mm 15 3/4"
Savigny	1110mm 43 11/16"	0mm 0"	400mm 15 3/4"
Cluny 1400 R	1410mm 55 1/2"	505mm 19 7/8"	400mm 15 3/4"
Chagny 1400 R	1410mm 55 1/2"	505mm 19 7/8"	400mm 15 3/4"
Fontenay	1510mm 59 7/16"	400mm 15 3/4"	400mm 15 3/4"
Citeaux	1510mm 59 7/16"	400mm 15 3/4"	400mm 15 3/4"
Cluny 1800	1810mm 71 1/4"	400mm 15 3/4"	400mm 15 3/4"
Chagny 1800	1810mm 71 1/4"	400mm 15 3/4"	400mm 15 3/4"
Sully 1800 R	1810mm 71 1/4"	705mm 27 3/4"	400mm 15 3/4"
Sully 2200	2210mm 87"	400mm 15 3/4"	400mm 15 3/4"



All measurements below are with a 50mm (2") spacer installed:

Range Height	A (min*)	B	C	D	E	F (max)	G (max)	H	I	J	K	L
Default	900mm 35 3/8"	457mm 18"	914mm 36"	330mm 13"	51mm 2"	700mm 27 9/16"	637mm 25 1/8"	132mm 5 3/16"	215mm 8 7/16"	See Range Width Table		
Optional	930mm 36 3/8"											
*All final range height dimensions are variable with the use of the adjustable range feet. Maximum added height for the Roller Feet: 16mm - 5/8", Extended Leveling Feet : 30mm - 1 3/16"												