

## Gas Connection

The installer or homeowner will need to purchase a ½" i.d. X 4'/5'/6' flexible metal gas line from a local hardware store. This should come with 2 compression fittings, one for each end. Make sure the flex line BTU rating meets or exceeds the maximum BTU output of the range. Check the BTU/hr rating on the UL sticker found at the back of the range.



• DO NOT use this connector on appliances in moving vehicles (such as RVs, trailers, etc.) This does not include Manufactured Housing (Permanent Residence Mobile Homes). Infrared heaters expand and contract (cycle) during use which may cause connector to fail.

• DO NOT use this connector with infrared (radiant tube) heaters. Infrared heaters expand and contract (cycle) during use which may cause connector to fail.

Model	ID in	1 foot	1-1/2 foot	2 foot	2-1/2 foot	3 foot	4 foot	5 foot	6 foot
CSBL	1/4	48,000	43,000	40,000	36,400	33,400	28,900	24,900	23,100
CSSD	3/8	102,000	93,100	85,700	77,100	71,100	60,500	53,200	48,100
CSSC	1/2	186,000	164,200	150,200	136,000	125,000	106,000	93,200	86,000
CSSB	3/4	—	—	200,000	270,500	277,900	215,000	197,400	173,900

This connector meets or exceeds the minimum allowable capacity as determined under test conditions specified in ANSI Z21.24 • CSA 6.10. Strength length capacity listed in BTU per hr using 0.84 SP Gr., 1000 BTU per Cu Ft. Gas at 0.50 inch Water Column Pressure Drop. The capacity at 50 Pw (0.2 inch water column) pressure drop can be determined by multiplying the BTU per hr. listed in the table above by 0.632.

**RESIZING THE CONNECTOR**

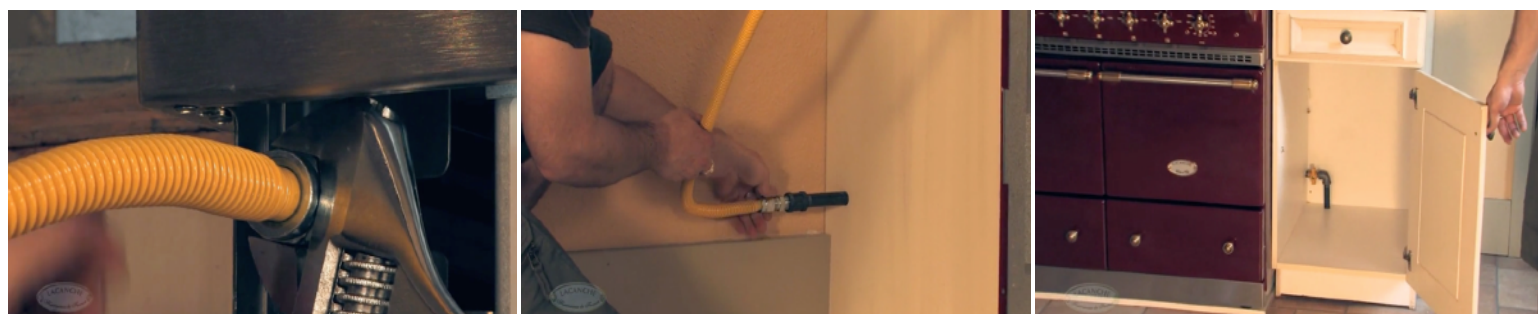


Evenly paint LP resistant pipe thread compound on the range fuel input threads and the iron fuel pipe stub-out threads (after the cut-off valve).

Install the 2 compression fittings supplied with the flexible metal fuel line on the range fuel input pipe and the iron pipe stub-out threads.



Now connect the flex line to the compression fittings. The compression fittings do not require compound sealant, but must be made tight enough to prevent fuel leakage. Use a wrench on each hex fitting to ensure tight seal.



After the fuel line is installed, open the gas cut-off valve and check for leaks with bubble fluid at every connection joint. Close the gas valve and refit any joint that has bubbles form.