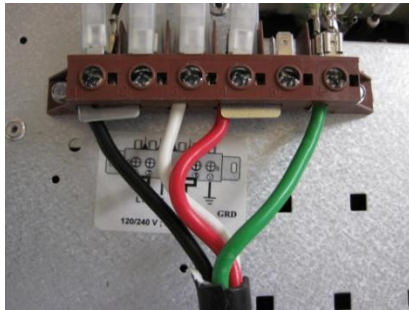




ranges of passion, form and function

New Gas Valve Troubleshooting & Repair

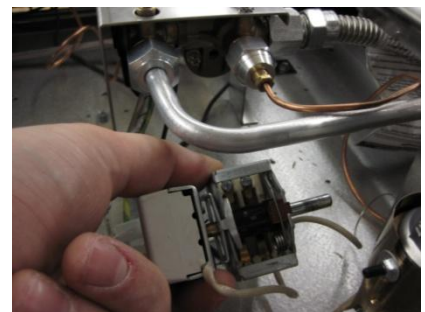
*** TURN OFF MAIN POWER AND GAS SUPPLY BEFORE PERFORMING WORK ON THE RANGE ***



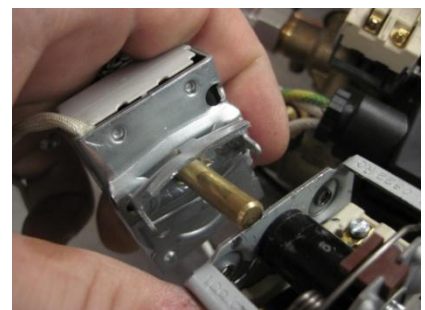
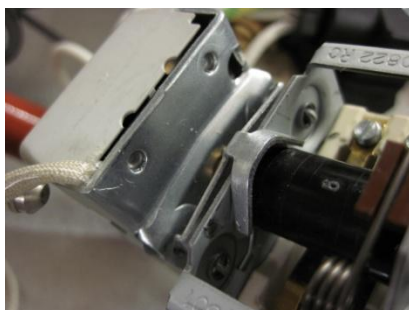
1. Check the terminal block connections. Make sure all terminal screws and jumper bars are in place and tightened.



2. Check continuity between the spade connections on the thermostat during entire temperature range. Replace as necessary (refer to Retaining clip on step 4).



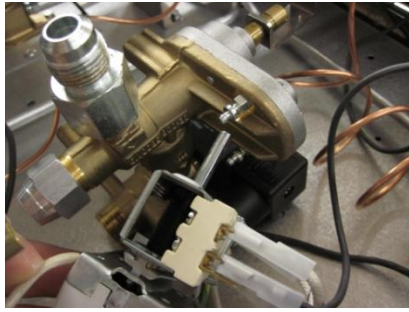
3. Remove the selector switch/thermostat unit simply by pulling straight toward the back of the valve body. Check continuity on gas oven selector switch terminal connections. Replace as necessary.



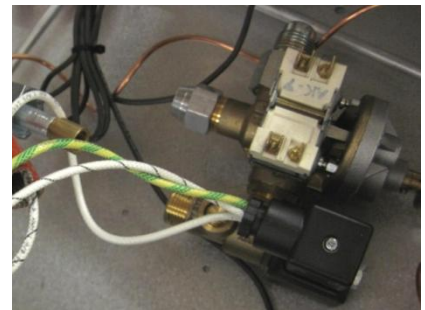
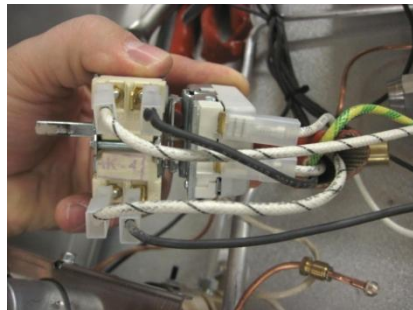
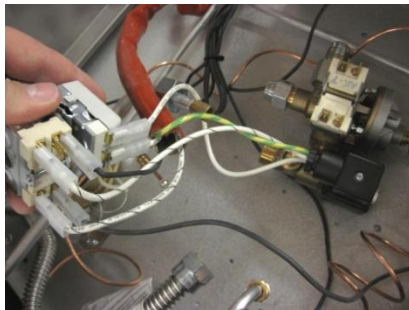
4. Make sure the gas oven thermostat is properly seated to the selector switch via the retaining clip.



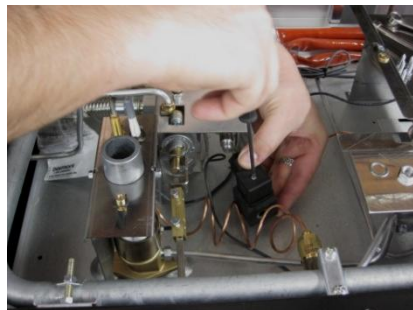
ranges of passion, form and function



5. Make sure the gas oven selector switch is properly seated and secure to the main gas oven valve body. This simply clips into place.



6. Inspect all wiring for fraying and breaks, especially at the spade connections on the terminal block, thermostat, selector switch, and 120v solenoid.



7. The 120v solenoid will make a slight buzzing sound while under electrical load. If it is silent when all other components are under correct operation and electrified, remove and replace by unscrewing it from the main valve body by removing the 13mm nut & washer. It will slide forward off the magnet shaft. After it is off the end of the shaft, turn it upside-down and remove the Philips screw. Unplug the connector and replace the solenoid. Install in reverse order.
8. Always check each gas line connection for leaks with bubble fluid (or equivalent) after re-assembly.